



Virginia Healthcare Workforce Briefs

Indicators from the Bureau of Labor Statistics'
Current Employment Statistics Survey
Series 1: State & National Employment

Series 1, Issue 89

August 2019

Highlights

- ◆ According to preliminary estimates, Virginia's Health Care & Social Assistance (HC&SA) sector enjoyed a small employment gain in July thanks to the creation of 200 new jobs during the month. This increase represents a one-month annualized employment growth rate of 0.5%. With this gain, Virginia's HC&SA sector has increased employment in each of the past three months.
- ◆ For the first time since April, Virginia experienced a gain in its total nonfarm payroll. In July, Virginia's total nonfarm payroll increased by 3,400. This gain in the state's total nonfarm payroll represents a one-month annualized growth rate of 1.0%, which is nearly double its 12-month growth rate of 0.6%.
- ◆ The national HC&SA sector enjoyed its largest employment gain since April after creating 50,400 new jobs in July. This monthly employment gain translates into a 3.0% annualized growth rate. So far this year, the national HC&SA sector has increased employment by 325,700.
- ◆ The nation's total nonfarm payroll increased by 164,000 in July, a gain that represents a one-month annualized growth rate of 1.3%. Over the past year, the nation's total nonfarm payroll has increased by 2.25 million. The national HC&SA sector has been responsible for nearly one-quarter of this growth.

Inside this Brief:

Virginia HC&SA Employment	2
Virginia Employment	2
National Employment	3
State Employment Growth	3
About the Data	4

Data in the report are seasonally adjusted. Self-employed persons, including health professionals in private practice, are not included.

Data in Brief

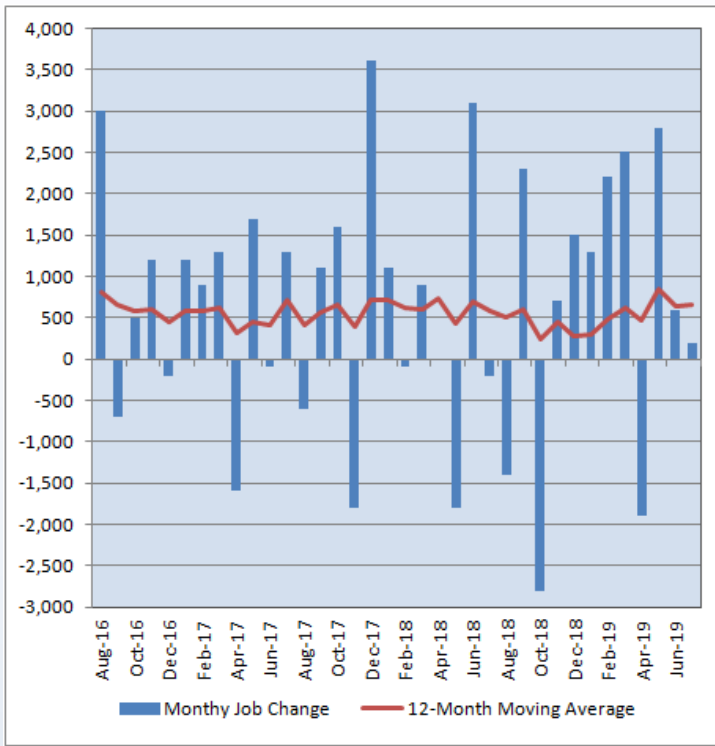
Seasonally Adjusted*	Employment, in Thousands				Growth Rate, Annualized		
	July 2018	Apr. 2019	June 2019	July 2019	12 Month	3 Month	1 Month
Nonfarm, Total							
Virginia	4,007.7	4,035.4	4,027.3	4,030.7	0.6%	-0.5%	1.0%
National	149,185.0	151,012.0	151,267.0	151,431.0	1.5%	1.1%	1.3%
Health Care & Social Assistance							
Virginia	445.6	450.0	453.4	453.6	1.8%	3.2%	0.5%
National	19,943.9	20,368.4	20,441.4	20,491.8	2.7%	2.4%	3.0%
All Other Nonfarm							
Virginia	3,562.1	3,585.4	3,573.9	3,577.1	0.4%	-0.9%	1.1%
National	129,241.1	130,643.6	130,825.6	130,939.2	1.3%	0.9%	1.0%

Preliminary estimates are italicized

*Seasonally adjusted data are adjusted by the Bureau of Labor Statistics to account for weather, holidays and other seasonal changes. Economists use seasonally adjusted data to reveal underlying trends over time. This series uses seasonally adjusted data exclusively. When comparing data in this series to other HWDC series, or publications from other sources, it is important to note whether the data reported have been seasonally adjusted.

Virginia HC&SA Employment

Figure 1: Monthly Change in Employment in Virginia’s Health Care & Social Assistance Sector, Seasonally Adjusted.



According to preliminary data released on Friday, August 16, 2019, by the U.S. Department of Labor, Bureau of Labor Statistics, Virginia’s Health Care & Social Assistance (HC&SA) sector enjoyed its third consecutive month of positive employment growth in July. However, this month’s employment gain was relatively modest as only 200 new HC&SA jobs were created across the state. This increase translates into a one-month annualized employment growth rate of 0.5%.

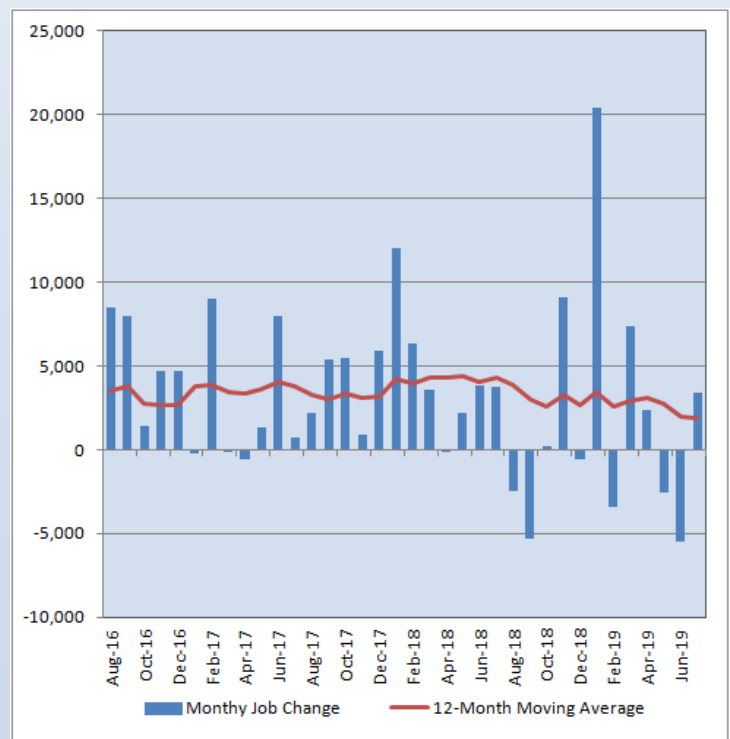
Over the past three months, HC&SA employment in Virginia has grown by 3,600. This gain represents a 3.2% annualized employment growth rate. Although this growth rate exceeds the comparable 2.4% national HC&SA average, most of this growth occurred in May when 2,800 HC&SA jobs were created across the state. In each of the past two months, Virginia’s HC&SA employment gain has been below its own 12-month moving average. Regardless, the 12-month moving average of the employment change in Virginia’s HC&SA sector did experience a small increase in July. Over the past year, Virginia’s HC&SA sector has created an average of 667 jobs per month.

Virginia Employment

Over each of the previous two months, Virginia experienced a decline in its total nonfarm payroll. However, the state’s total nonfarm payroll rebounded in July thanks to an increase of 3,400 during the month. This gain translates into a one-month annualized employment growth rate of 1.0%. This increase also represents the largest monthly gain in Virginia’s total nonfarm payroll since March. Despite this improvement, Virginia’s total nonfarm payroll has declined by 4,700 over the past three months, a loss that translates into a -0.5% annualized growth rate.

July’s employment gain also did little to alter the long-term trend in Virginia’s total nonfarm payroll. Since the beginning of the year, the 12-month moving average of the change in Virginia’s total nonfarm payroll has fallen by more than 40%. This moving average fell for the third consecutive month in July to its lowest value in more than five years. With this decline, Virginia’s total nonfarm payroll has now increased by an average of 1,917 per month over the past year. This gain translates into a 12-month growth rate of 0.6%. Virginia’s HC&SA sector has been responsible for more than one-third of this statewide employment growth.

Figure 2: Monthly Change in Employment in Virginia’s Total Non-farm Payroll, Seasonally Adjusted.

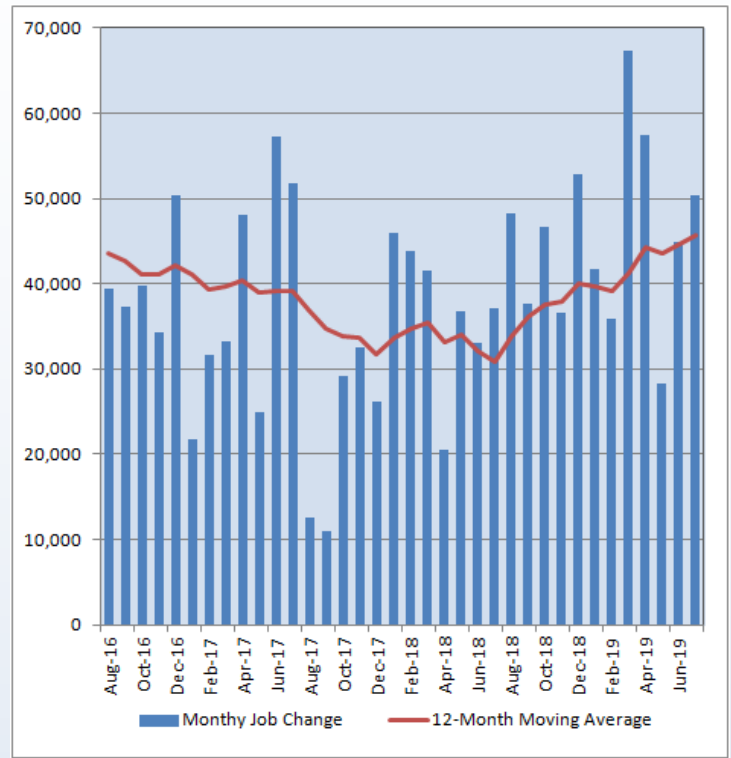


National Employment

In May, the national HC&SA sector experienced its weakest monthly employment gain in more than one year. However, employment growth in the national HC&SA sector has improved in the following two months. In June, the national HC&SA sector created 44,800 jobs, and this gain was followed by the creation of an additional 50,400 new jobs in July. This gain represents a one-month annualized employment growth rate of 3.0%. This monthly gain also exceeds the 12-month moving average of the change in national HC&SA employment, which continued its upward ascent in July. Over the past year, the national HC&SA sector has created an average of 45,658 jobs per month.

The HC&SA sector was responsible for more than 30% of all nationwide growth in total nonfarm payroll during the month. In July, the nation’s total nonfarm payroll increased by 164,000. This gain represents a one-month annualized employment growth rate of 1.3%, which is slightly below the 1.5% growth rate in the nation’s total nonfarm payroll over the past year. During these 12 months, the nation’s total nonfarm payroll has increased by 2.25 million, and the HC&SA sector has been responsible for 24% of this growth.

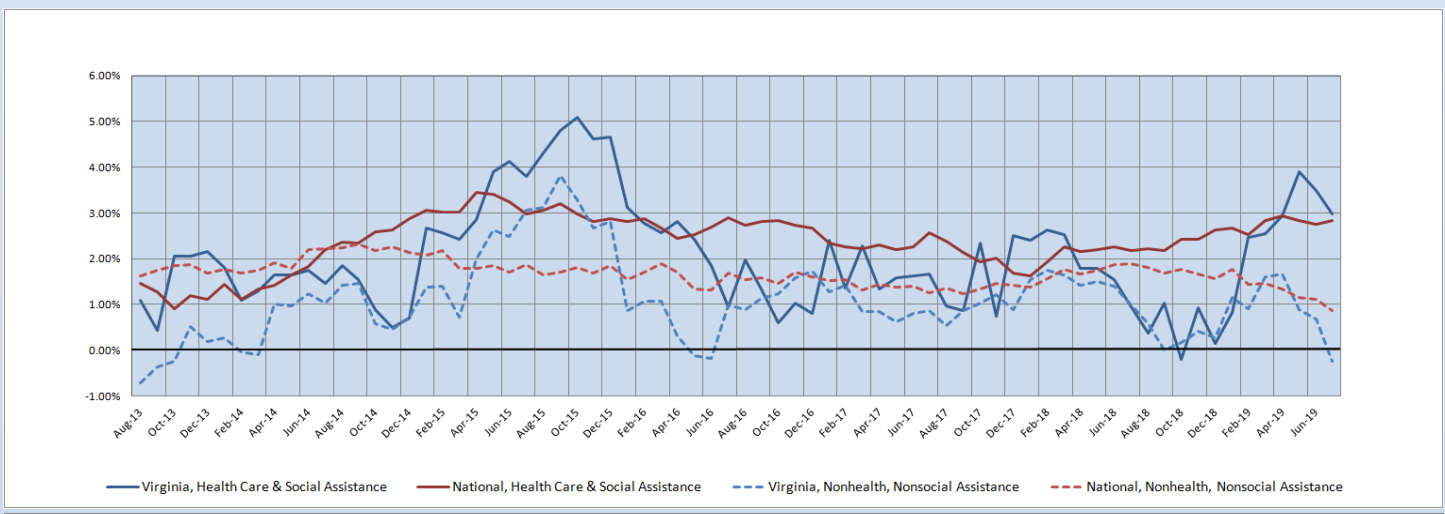
Figure 3: Monthly Change in Employment in National Health Care & Social Assistance Sector, Seasonally Adjusted



State Employment Growth

Despite positive employment growth over each of the past three months, the six-month moving average of the employment growth rate in Virginia’s HC&SA sector fell in July from 3.48% to 2.98%, thereby reaching its lowest value since March. At the same time, the six-month moving average of the growth rate in Virginia’s total nonfarm payroll turned negative in July, falling from 0.68% to -0.25% during the month. This represents the first time in more than three years in which Virginia’s total nonfarm payroll has experienced negative growth over a six-month period. Likewise, the nation’s total nonfarm payroll also fell in July from 1.11% to 0.86%. Only the national HC&SA sector experienced an increase in its six-month employment growth rate moving average, which rose from 2.75% to 2.83% in July.

Figure 4: Six-Month Moving Average, Employment Growth, Seasonally Adjusted



Healthcare Workforce
Data Center

Perimeter Center
9960 Mayland Drive, Suite 300
Henrico, VA 23233-1463

Phone: (804) 367-2115
Fax: (804) 527-4434
E-mail: hwdc@dhp.virginia.gov

www.dhp.virginia.gov/hwdc/

HWDC Staff:

Elizabeth Carter, PhD <i>Executive Director</i>	Yetty Shobo, PhD <i>Deputy Director</i>
Laura Jackson, MSHSA <i>Operations Manager</i>	Rajana Siva, MBA <i>Research Analyst</i>
Christopher Coyle <i>Research Assistant</i>	

The Department of Health Professions Healthcare Workforce Data Center works to improve the data collection and measurement of Virginia's healthcare workforce through regular assessment of workforce supply and demand issues among the 80 professions and 350,000 practitioners licensed in Virginia by DHP.

The HWDC collects data on Virginia's licensed health professionals through surveys completed during the online license renewal and application process. Survey results and data may be accessed on our website: www.dhp.virginia.gov/hwdc/.

The HWDC also provides a series of Virginia Healthcare Workforce Briefs based on data collected by the US Department of Labor's Bureau of Labor Statistics and the US Department of Commerce' Bureau of Economic Analysis.

Virginia Healthcare Workforce Briefs:

Series 1: State & National Employment (Monthly)

Series 2: Virginia Regional Employment (Monthly)

Series 3: Income & Compensation (Quarterly)

Follow us on. . .

Tumblr: <http://vahwdc.tumblr.com/>

About the Data

Data in this report are from the US Department of Labor, Bureau of Labor Statistics' Current Employment Statistics program. The CES program surveys about 143,000 businesses and government agencies monthly. Unless otherwise noted, this series uses seasonally-adjusted data that removes seasonal variations related to weather, holidays, weekends, seasons and other predictable variations. This allows us to better examine underlying trends in the labor market. Data from recent months are preliminary and subject to revision in future releases from the CES. Revisions will be reported in future editions of this series. Unless otherwise noted, the CES data presented in this series:

Includes:

- ◆ Data on employed individuals drawing a paycheck (payroll employees).
- ◆ All employees, regardless of role, occupation or hours worked.
- ◆ HC&SA employees in the private sector only.
- ◆ Persons employed by health professionals in private practice.
- ◆ Both government and private sector workers in nonfarm employment data.

Does not include:

- ◆ Self-employed workers or volunteers, including health professionals in private practice.
- ◆ HC&SA employees in the public sector. (These are counted as government workers in monthly reports).
- ◆ Information on hours worked or the quality of employment.
- ◆ Government workers in HC&SA level data. (Government workers, regardless of occupation and